

Thermal Imaging Camera program



BCK30A-15 Miniature Thermal Image camera



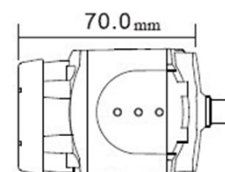
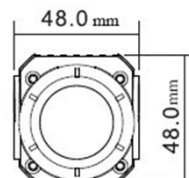
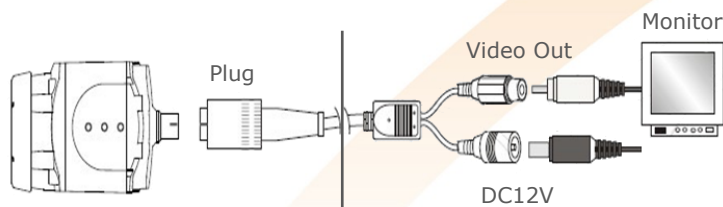
The BC30A series is featured with compact size(70x48x48mm) and light weight (0,23 kg.).

Adopted the latest thermal vision technology, it can produce sharp clear images with extremely wide view in complete darkness, light fog and smoky conditions.

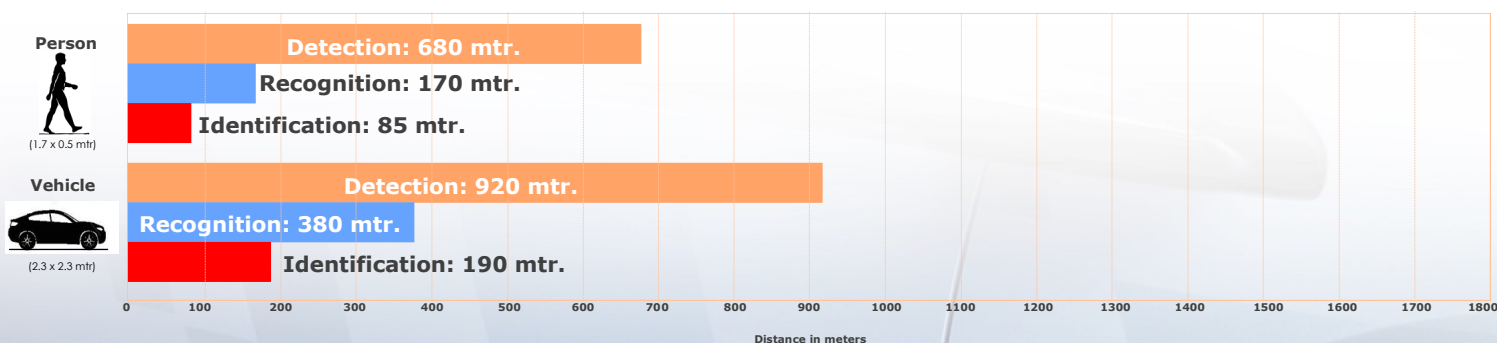
With IP66 enclosure, it is your ideal choice for outdoor covert surveillance and security requirements.

Features

- Plug and Play design with one port
- Short response time
- 15 mm. Wide-angle lens delivers super-wide viewing range
- Easy operation and integration
- Housing: Hermetically sealed water and dust proof
- Compact size: 70 x 48 x 48 mm.
- Light weight: 0.23Kg
- Affordable price and high reliability



15 mm Lens Performance



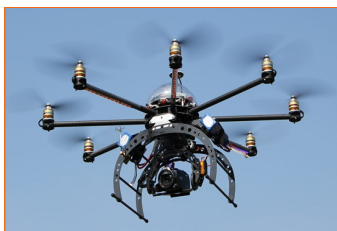
Note:

Please take notice the actual distance will be displayed somewhat different as the above data which is mainly related to the configuration of the thermal imager, environmental conditions, user experience and the monitor or screen material

Applications



Community Entrance



Drones and UAV's



Warehouses

- * Entrance security
- * Banks
- * Warehouses
- * Community entrance
- * Drones or UAV systems
- * Intelligent traffic security

Specifications

Detector Characteristics

Detector type:	Uncooled FPA microbolometer a-Si
Resolution and pixel size:	384 x 288 mm - 25μm
NETD:	≤80mk@25°C
Spectral range:	8~14μm

Image manage

Lens Options:	Germanium manual focus lens with germanium window, hard carbon and anti-reflexion coated 15mm
Field of view	37°(H) x 28°(V)
Spatial resolutions(IFOV)	1.67mrad
Frame rate	50Hz(PAL) /60Hz(NTSC)
Calibration	Auto

Image presentation

Video Output:	RS170CCIR/PAL composite video
Electronic zoom:	2 x
Image process	Digital Enhancement
Polarity:	B&W, B&W inverse

Power Supply

Input Voltage:	12V DC
Power Dissipation	4W (Standard)

Environment

Operating Temperature	-20°C ~ +55°C
Storage Temperature:	-35°C ~ +65°C
Encapsulation:	IP66

Psychical Characteristics

Housing material:	Al-alloy
Net Weighth:	0.23Kg.
Size:	80 x 48 x 48 mm.
Standard package:	Thermal camera; AV line; User manual; Power adapter; Cabling; Bracket; Aluminum box

BCK30A-35 Box Thermal Image Camera



Small size, light weight and rugged design allow this box thermal imager for easy operation and integration.

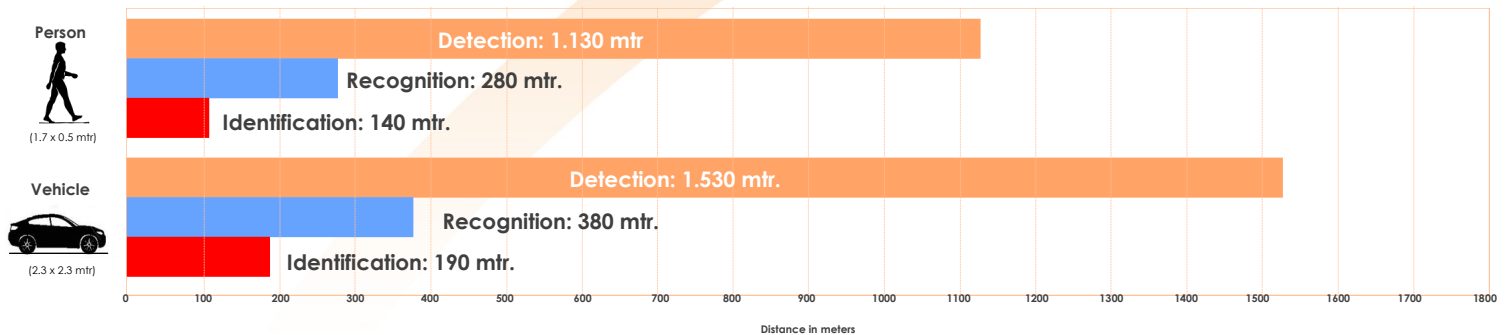
Based on the latest infrared thermal technology, the camera provides clear 24/7 imaging capability even in total darkness, light fog or smoke, it is the perfect replacement for day/night box camera and very reliable for short/middle range civil surveillance applications.

Features

- Rugged & compact design ensure easy integration
- Frame rate: 384 x 288 pixels
- Short response time & refreshing frequency
- Lens options: 25/35 mm
- Black/White hot image & pseudo color image
- Full OSD menu parameters adjusting
- Low power consumption
- Against dust and humidity



25 mm Lens Performance



35 mm Lens Performance



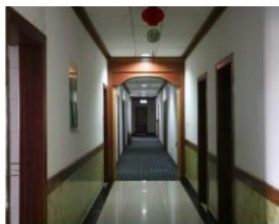
Note:

Please take notice the actual distance will be displayed somewhat different as the above data which is mainly related to the configuration of the thermal imager, environmental conditions, user experience and the monitor or screen material

Applications



Warehouse surveillance



Hotel surveillance



ATM surveillance

Sensitive sites like as:

- ◇ Chemical Plants
- ◇ Nuclear Sites
- ◇ Warehouses
- ◇ Banks
- ◇ Airports
- ◇ UAV Systems
- ◇ Residential areas
- ◇ Prisons
- ◇ UAV-systems
- ◇ Etc.

Specifications

Detector Characteristics

Detector type:	Uncooled FPA microbolometer α -Si
Resolution and pixel size:	384 x 288 mm - 25 μ m
NETD:	$\leq 85\text{mk}@25^{\circ}\text{C}$
Spectral range:	8~14 μ m

Image management

Lens Options:	Motorised lens coated with hard carbon	
	25 mm	35 mm
Field of view	22°(H) x 16.5°(V)	16°(H) x 12°(V)
Spatial resolutions(IFOV)	1.00 mrad	0.71 mrad
Frame rate	50Hz(PAL) /60Hz(NTSC)	
Calibration	Manual/Auto	
Brightness/contrast:	Manual/Auto	
Video Output:	Analogue	
Electronic zoom:	2 ~ 4 x	
Image process	Digital Enhancement	
Polarity:	White/Black Hot & Pseudo color. Thermal Image Switchable	

Power Supply

Input Voltage:	7 - 15 Volt DC
Power dissipation	2 Watt

Environment

Operating temperature	-20°C ~ +50°C
Storage temperature:	-35°C ~ +65°C
Encapsulation:	IP66

Psychical Characteristics

Housing material:	Al-alloy - Red/Black. Optional: Silver
Net Weigth:	0.46Kg.
Size:	124 x 58 x 49 mm.
Standard package:	Thermal camera; User manual; Power adapter; Cables; Aluminum box

BCK30B-Outdoor Thermal Image camera



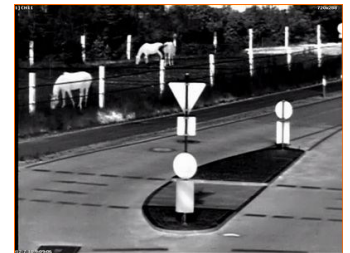
With advanced infrared thermal image technology, equipped with 100 mm. motorized lens, the BCK30B thermal camera series are designed for long range (able to detect over 2 km. Distance) security and surveillance applications with sharp and crystal image.

Meets IP67 standards, can be fixed or mounted with PTZ.

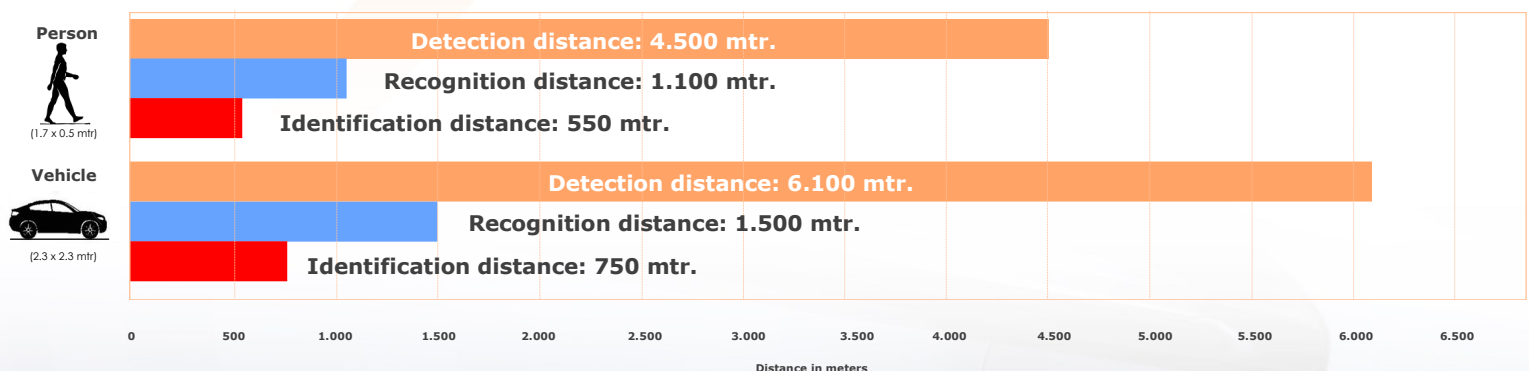
Guard top security 24/7 in total darkness, smoky, light foggy and other harsh conditions.

Features

- High sensitivity ULIS thermal image detector
- 384 x 288 pixels high resolution uncooled FPA
- Super high frame rate display 50Hz(PAL) or 60Hz(NTSC)
- 75 / 100 mm. Long-range motorized germanium lens
- Outstanding sensitivity and image quality
- Housing: Al-Alloy IP67 weatherproof suitable for outdoor use.
- Against dust, fog, snow and other bad weather conditions
- Optional: Pan tilt functionality



100 mm Lens Performance



Note:

Please take notice the actual distance will be displayed somewhat different as the above data which is mainly related to the configuration of the thermal imager, environmental conditions, user experience and the monitor or screen material

Applications



Forest Fire Prevention



Airport Surveillance



Frontier defence surveillance

- * Forest Fire protection
- * Airport Surveillance
- * Frontier defence surveillance
- * Coastal/border control
- * Seaport and Harbour protection
- * Chemical- and Nuclear plants

Specifications

Detector Characteristics

Detector type:	Uncooled FPA microbolometer α -Si
Resolution and pixel size:	384 x 288 pixels - 25 μ m
NETD:	$\leq 80\text{mk}@25^{\circ}\text{C}$
Spectral range:	8~14 μ m

Image manage

Lens Options:	Motorised lens coated with hard carbon 100mm
Field of view	6 $^{\circ}$ (H) x 4 $^{\circ}$ (V)
Spatial resolutions(IFOV)	0.25mrad
Frame rate	50Hz(PAL) /60Hz(NTSC)
Video Output	RS170 CCIR/PAL composite video
Calibration	Auto

PTZ

Pan Range:	0 $^{\circ}$ - 355 $^{\circ}$ (Adjustable) - 9 $^{\circ}$ /step
Tilt Range:	- 60 $^{\circ}$ ~ + 10 $^{\circ}$ - 4 $^{\circ}$ /step
Weight:	9.5 Kg.
Power:	24VAC \pm 10%

Power Supply

Input Voltage:	24V DC
Power Dissipation	2 Watt (Standard)
Connector:	RS-485

Environment

Operating Temperature	-20 $^{\circ}\text{C}$ ~ +55 $^{\circ}\text{C}$
Storage Temperature:	-35 $^{\circ}\text{C}$ ~ +65 $^{\circ}\text{C}$
Encapsulation:	IP66

Psychical Characteristics

Housing material:	Al-alloy
Net Weight:	16 Kg.
Size:	183 x 183 x 355 mm.
Standard package:	Thermal camera; User manual; 12V DC power adapter

BCK30A-35D Speed Dome Thermal Image camera

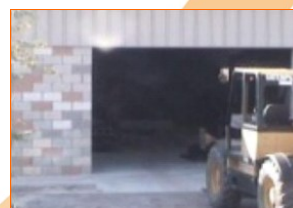


With newly adopted infrared thermal technology, equipped with 32 x optical Zoom CCD camera.

The speed dome thermal imaging camera is the perfect replacement for day/night dome-camera, providing clear 24/7 imaging capability even in total darkness, light or smoke.

Features

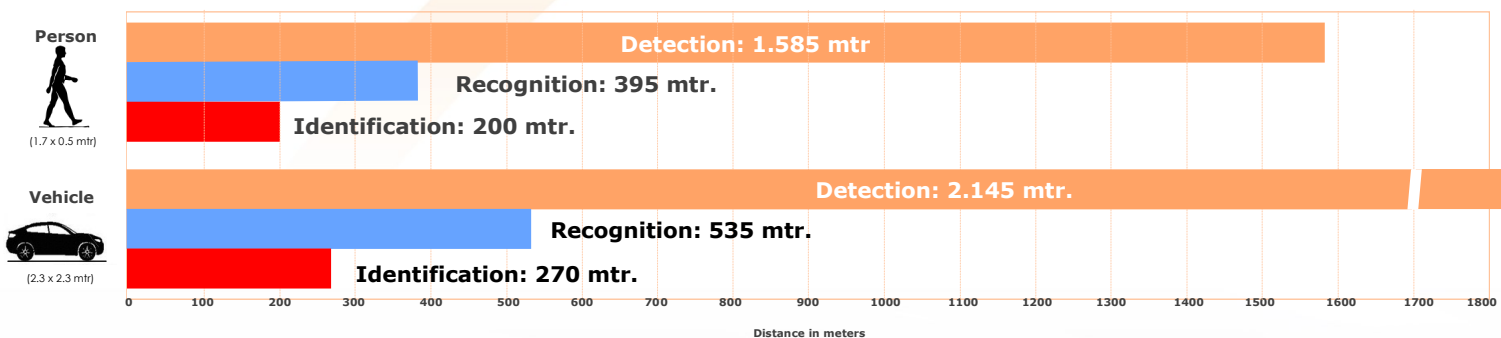
- UFPA, 384 x 288 pixels Thermal camera
- 32 x Zoom CCD camera
- Supports 128 preset positions and 5 tour routes
- Against thunder and water
- Automatic reset when preset goes wrong
- Low power consumption
- Standard 8" All-alloy housing
- Optional with 35/50 mm. Motorized focal lens



Demo for Dual Image



35 mm Lens Performance



Note:

Please take notice the actual distance will be displayed somewhat different as the above data which is mainly related to the configuration of the thermal imager, environmental conditions, user experience and the monitor or screen material

Applications



Perimeter detection



Traffic



Harbour protection

- * Sensitive sites like as:
- * Chemical- and nuclear plants
- * Residential and private areas
- * Seaport - Quay - and Harbour protection
- * Border control

Specifications

Detector Characteristics

Detector type:	Uncooled FPA microbolometer α -Si
Resolution and pixel size:	384 x 288 pixels - 25 μ m
NETD:	≤ 80 mk@25 $^{\circ}$ C
Spectral range:	8~14 μ m

Image manage

Lens Options:	Motorized lens coated with hard carbon	
	35 mm D	50 mmD
Field of view:	15.7 $^{\circ}$ (H) x 11.8 $^{\circ}$ (V)	11 $^{\circ}$ (H) x 8 $^{\circ}$ (V)
Spatial resolutions(IFOV):	0.71mrad	0.5mrad
Frame rate:	50Hz(PAL) /60Hz(NTSC)	
Calibration:	Auto/manual	
Polarity:	White/Black hot	
Video Output:	RS170 CCIR/PAL composite video	

Built-in Pan & Tilt

Preset positions:	128 (5-tours route)
Auto scan:	2 x
Left & Right limitation scan:	359 $^{\circ}$ adjustable
Auto flip:	After tilt 90 $^{\circ}$, camera will be automatically flip 180 $^{\circ}$
Pan Range:	360 $^{\circ}$ back and forth rotating
Home point:	1-255 sec. (adjustable)
Tilt range:	Vertically 90 $^{\circ}$ back and forth rotating
Tilt Speed:	0.5 - 120 $^{\circ}$ /sec.
Control mode:	RS-485 / Pelco ID

Power Supply

Input Voltage:	12V DC
Power Dissipation:	2 Watt (For thermal module only)

Environment

Operating Temperature:	-20 $^{\circ}$ C ~ +55 $^{\circ}$ C	Storage Temperature:	-35 $^{\circ}$ C ~ +65 $^{\circ}$ C
Encapsulation:	IP66		

Psychical Characteristics

Housing material:	Al-alloy	Size:	350 x 220 x 220 mm.
Standard package:	Speed Dome thermal camera; User manual; Power adapter		

BCK30S-35D Dual Image Speed Dome Thermal Image camera



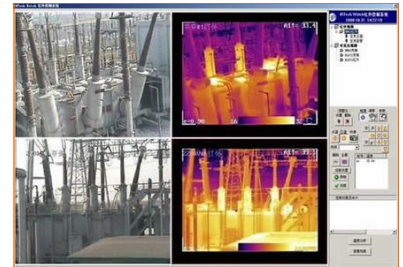
With newly adepted infrared thermal technology, equipped with standard 8 inch alloy housing.

The speed dome thermal imaging camera is the perfect replacement for day/night dome-camera, providing clear 24/7 imaging capability even in total darkness, light or smoke.

Features

- UFPA, 384 x 288 pixels, 25 μ m.
- Outstanding sensitivity and image quality
- 360° Horizontal continues rotation
- Supports 128 preset positions and 5 tour routes
- Against thunder and water
- Automatic reset when preset goes wrong
- Low power consumption
- Standard 8" All/alloy housing
- Optional with 35/50 mm. Motorized focal lens

Effect Images



35 mm Lens Performance



Note:

Please take notice the actual distance will be displayed somewhat different as the above data which is mainly related to the configuration of the thermal imager, environmental conditions, user experience and the monitor or screen material

Applications



Perimeter detection



Traffic



Harbour protection

- * Sensitive sites like as:
- * Chemical – and nuclear plants
- * Residential and private areas
- * Seaport - Quay - and Harbour protection
- * Border control

Specifications

Detector Characteristics

Detector type:	Uncooled FPA microbolometer α -Si
Resolution and pixel size:	384 x 288 pixels - 25 μ m
NETD:	$\leq 80\text{mk@}25^{\circ}\text{C}$
Spectral range:	8~14 μ m

Image manage

Lens Options:	35 mm. Auto focus lens for thermal image	22 x zoom lens for visible light image
CCD resolution:	1/4 Sony CCD, 480 TVL	
Field of view	16°(H) x 12°(V)	
Spatial resolutions(IFOV)	0.71mrad	
Video Output	RS170 CCIR/PAL composite video	
Image process:	Digital Detail Enhancement	
Image polarity:	Thermal Image: White hot	Visible light image: Colour

PTZ

Rotation:	360° horizontal continues rotation. Automatic reset when preset has gone wrong		
Preset:	128	Tour:	5
Pan Range:	360° Back and forth rotating	Tilt Range:	Vertically 90°
Zoom:	22 x		
Protocol:	Automaticly identify Pello D&P two protocols and baud rate		

Power Supply

Input Voltage:	24V DC	Power Dissipation:	2 Wat Standard
Connector:	RS-485		

Environment

Operating Temperature	-10°C ~ +50°C	Storage temperature:	-25°C ~ +60°C
Encapsulation:	IP66		

Psychical Characteristics

Housing material:	Al-alloy /White
Net Weight:	6.5 Kg.
Size:	344 x 219 x 218 mm.
Standard package:	Speed Dome thermal camera; RS-485 communication cable; Mounting Brackets; 24 VDC power Adapter ; User manual

BCE Bos Consultancy Enterprises

BCE Bos Consultancy Enterprises is a Dutch based company, constantly building, extending and maintaining a network of distributors throughout Europe and Russia. Our aim is to identify resellers in each country to establish reliable long-term partnerships. **BCE** has the wide knowledge and specialization to deliver solutions for the high end of the security spectrum. **BCE** represents a large number of international manufacturers specialized in video networks for cities and industrial zones, thermal camera's, switches, personal media radio systems and covert solutions like as:



Wavesight

Wireless Video Outdoor Network solutions suitable at cities, harbors, airports and industrial areas. Providing stable Point to Point and Point to Multipoint connections up to 300 Mbps and 40 kilometers of distance with license free and licensed connections.



Switches, power supplies and Surge Protectors.

A great variety of industrial and desktop switches. Managed, Unmanaged, PoE, PoE+ switches suitable for integrated use at surveillance systems of cameras and wireless radio configurations. Up to 1 Gb.



RapidCam

RapdiCam is a rapid to deploy, user friendly stand alone camera solution which can be used for observation and covert covert purposes.



Thermal camera program.

Thermal camera solutions for use at Industrial sites, Border control, Airports, Harbours, Perimeters etc. For bright exposure in colour at day time and monochrome during night time. Solutions up to a distance of 5 kilometers.



ANPR Camera Program.

ANPR camera program to monitor number plates at sites, parking lots, entry/exit gates and highways at speeds up to 220 kmph. Can be also delivered with ANPR software or built-in Stainless steel pole.



DigiController

IP based I/O controller supporting many connectivity protocols. With web based interface, DIN rail mount and small form factor.



Body Worn Camera program.

The most reliable Portable Law Enforcement camera system used at Police, Special forces, border Control, fire brigades, Surveillance and Security Guards



Smartdetect

Full stand alone camera system. Can be either used as point to point communication as well as within remote network environments. Specially designed for observation and covert operations.



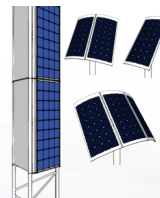
Cartag

Wireless security system protect stealing parts from cars parked at parking places of car dealers, lease companies and fleet owners.



Patio Mounts and Brackets.

Robust steel galvanised, aluminium or stainless steel patio mounts, pole extenders, L + M wall brackets and U-clamps in different size and design. Ideal for easy installation of radios and cameras at top of buildings, poles and walls.



Stand Alone Solar Power Systems.

The small light weight and rapid deploy solar solution for cameras and radio's at sites without any infrastructure.

DISTRUBUTED BY:



BCE Bos Consultancy Enterprises

Bermweg 494
2907 LE Capelle aan den IJssel
the Netherlands

Tel.: +31 104 502 545
Mobile: +31 622 732 396
Email: info@bconsent.nl
Website: www.bconsent.nl