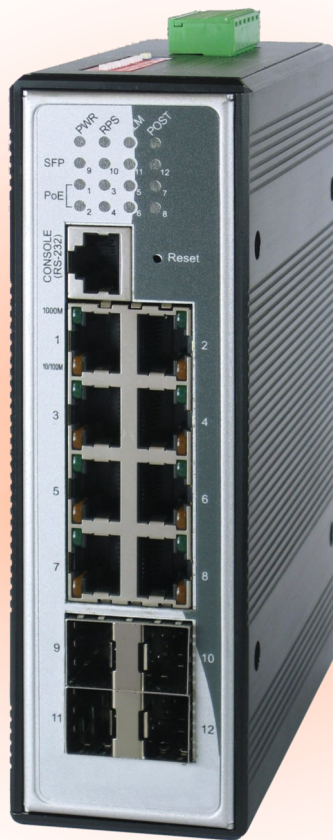


8-ports Managed PoE+ Switch VIBC8648P

Managed

Video

Audio



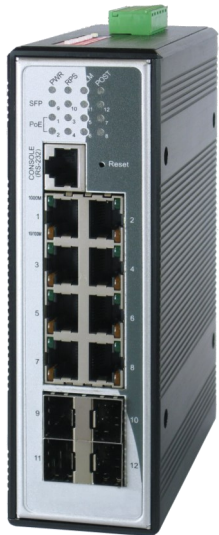
Data

Gigabit

Fiber Optic

PoE+

Description



VIBC8648P Managed Industrial PoE Ethernet Switch

8-port 10/100/1000Base-T + 4 SFP Gigabit Ports

The Layer2 Managed Industrial switch is equipped with 8 port 10/100/1000Base-T and 4 Gigabit SFP slots that are PoE+ compliant. Engineered with hardened components and enclosed in a rugged case, the switch can operate in wide temperatures from -40°C to 70°C and also has an excellent tolerance capability to high vibration and shock. As an Industrial switch, it suits your heavy industrial environments and yet contains all the standard features of other switches.

PoE+ function on 8 ports 10/100/1000 Base-T complies with IEEE 802.3at standards and allows them to supply up to 30W per port for network attached devices such as WLAN Access Points, VoIP phones and IP surveillance cameras that can be powered by Ethernet connectivity. The INS-8648P eliminates the need for installing additional power outlets or adapters, thus network power planning is simplified and overall installation and maintenance costs are reduced. In addition, the Layer 2 switch offers a full complement of management functions to allow easy-to-use configuration and monitoring.



Features Highlights

Robust Switch Performance

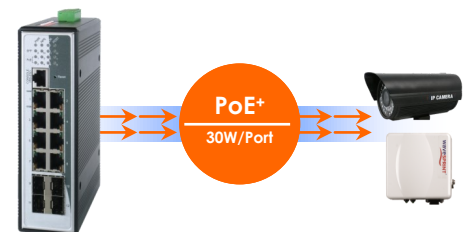
The VIBC8648P is built with IP30 metal case protection, surge and ESD protection to deliver robust performance and withstand extreme conditions in Industrial environments. The SFP ports support 1000Mbps for high bandwidth transmissions and the SFP DDM feature enables service providers to monitor SFP parameters.

In case of any abnormal hardware condition, the switch automatically sends warnings through email and relay output with real-time alarm messages. This assists the system administrators to immediately react to emergency events and diagnose the faults more efficiently for smoother network operations.



High-Power Budget for PoE Network Devices

To reduce the required time and cost of installing additional electrical sources, the VIBC8648P implements PoE technology. The switch supplies power over the same cable that is used to carry network traffic and delivers a high power budget of 200W to suit various power requirements. Using SNMP and Web interface, the PoE functions on each port can be enabled and disabled to save power and energy.



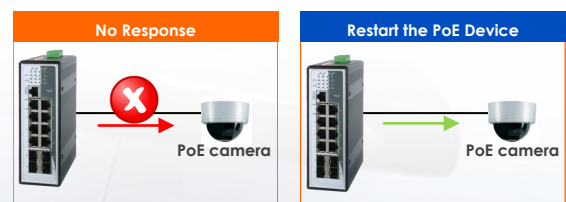
Intelligent PoE for powered device

The VIBC8648P is designed with intelligent PoE features to utilize power more efficiently. To monitor real-time status of PDs, the switch sends alive-checking packets to PDs. This reduces management burden and increases system reliability. Using power scheduling mechanism of the switch, administrators can set power on each port to a desired hourly/weekly schedule and can enable or disable the power output to these devices accordingly.

PoE Scheduling



PoE Alive-Checking



Redundant Power system

Mission-critical industrial applications need to operate without any interruptions because even a minimum network downtime can hugely impact the overall output. Providing continuous power and as well as data to such applications is now made easy with VIBC8648P's redundant power system. The switch is designed with standard industrial terminal block for redundant power. In case the primary power supply fails, the secondary power will powers up the switch and enables switch to provide continuous services.

Feature Highlights

Efficient network monitoring and proactive capability

In a network, the issues that impact network performance can be quickly resolved with the VIBC8648P's most accepted and enhanced traffic management, monitoring and analysis protocols such as SNMP and RMON. SNMPv1/v2c allows end users to centrally manage different levels in a network and RMON gives the capability to monitor the network performance. Service providers can ensure a reliable network by identifying connectivity and performance issues and isolating the problem remotely on individual switches. This avoids high OPEX and provides administrators the control they need to manage a healthy and efficient network.

Bandwidth management to prevent unpredictable network status

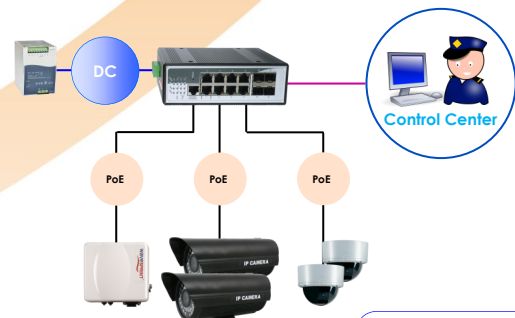
Industrial applications need different levels of services delivered to them reliably without any transmission delays and interruptions. The VIBC8648P has comprehensive QoS mechanisms which assign priority to applications and sends only specific dedicated traffic to them. In addition, bandwidth management function of the switch allocates high bandwidths to mission-critical communications and reduce the bandwidth to applications that are less critical. With full control of limiting the bandwidth, the administrators can prevent unpredictable errors and utilize the bandwidth more effectively.

Redundant Ring and Fast Recovery for Surveillance System

Even few seconds of missed communications due to link failures, especially in IP surveillance systems, can cause inconvenience and recovering it becomes very critical. The VIBC8648P Xpress Ring rapidly reacts to such link failures and recovers it within 15ms, a much faster fail-over time to support nonstop transmissions. And to handle the heavy traffic load of video and data, the switch implements.

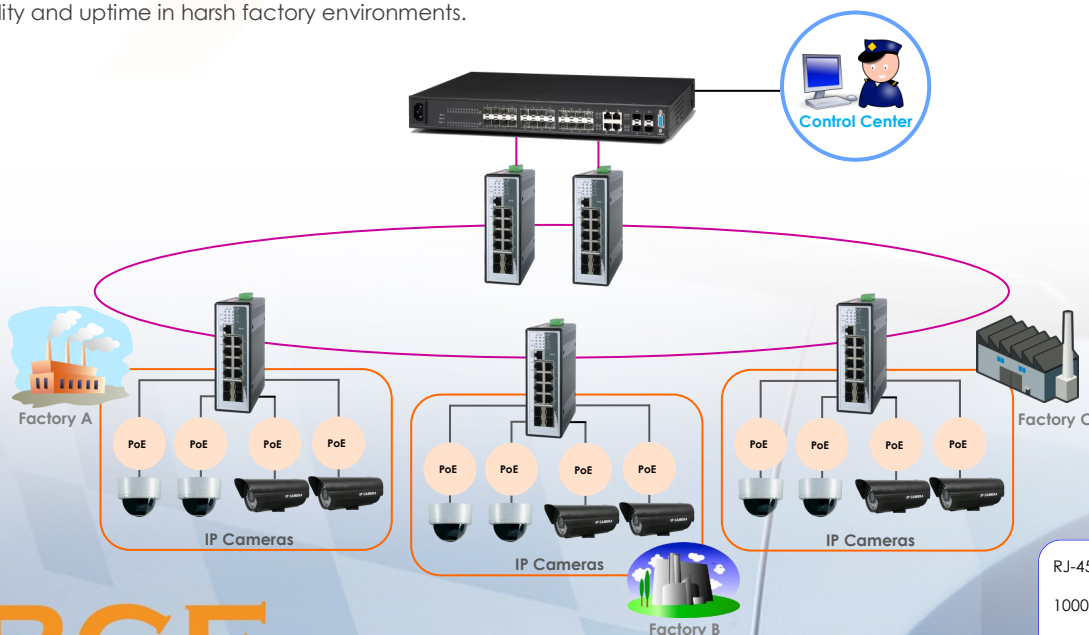
Applications

The VIBC8648P is compatible with 10/100/1000Mbps through RJ45 transceivers to guarantee a strong, stable long-distance connection of Ethernet, Fast Ethernet or Gigabit Ethernet, providing flexible deployment options to satisfy industrial networking requirements.



Redundant Ring

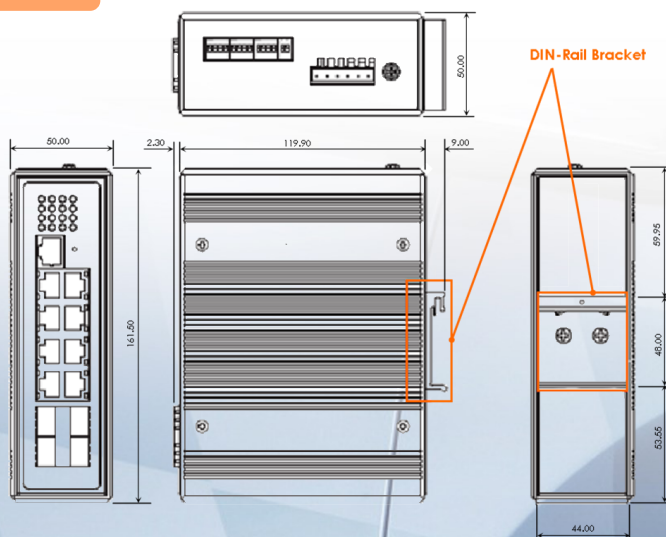
It incorporates advanced Redundant Ring technology, into customer's industrial automation and surveillance network to enhance system reliability and uptime in harsh factory environments.



Specifications

Standards		Interface		
IEEE 802.3	10BASE-T	Ports	8 x 10/100/1000Base-T (PoE RJ-45)	
IEEE 802.3u	100BASE-TX		4 x Gigabit SFP Slots	
IEEE 802.3ab	1000BASE-T		1 x Console Port (RJ-45 to RS-232)	
IEEE 802.3z	1000BASE-SX/LX			
IEEE 802.3x	Flow Control	Mechanical and Environment		
IEEE 802.3ad	Link Aggregation	Housing	IP30 Protection	
IEEE 802.1d	STP	Din-Rail	Metal	
IEEE 802.1w	RSTP	Operating Temperature	-40°C~70°C	
IEEE 802.1p	CoS Prioritization	Storage Temperature	-40°C~80°C	
IEEE 802.1q	VLAN Tagging	Operating Humidity	10 to 95% RH (non-condensing)	
IEEE 802.1x	Port Authentication	Storage Humidity	5 to 95% RH (non-condensing)	
IEEE 802.3af	Power over Ethernet	Weight	860g	
IEEE 802.3at	Power over Ethernet Plus	Dimensions	50x161.5x131.2mm (WxHxD)	
Network Management		Standards and Certifications		
Configuration	Command Line Interface, Telnet, Web GUI, SNMP v1/v2c, Management VLAN, system Log, Firmware Upgradable, configuration Upload/Download	EMI	FCC Part 15	
			EN55022: Class A	
VLAN	IEEE 802.1Q, GARP/GVRP support, Port-based VLAN, 4k Active VLAN Support		EN55011: 2009 Class A	
Redundancy	Xpress Ring, Dual Homing, STP/RSTP		EN61000-6-4	
Security	Access Control List, SSH, Port Security, 802.1x Port Authentication, DHCP snooping, MAC limitation	EMS	EN 55024	
Traffic control	IGMP snooping/Querier, MVR, Link Aggregation, QoS, Flow Control, Abnormal Traffic Detection, Rate Limitation, Storm Control, Port Isolation, Loop Detection		EN 61000-6-2 :	
			IEC 61000-4-2 (ESD): Level 3	
Diagnostics	LED status, SNMP trap, E-mail alarm, SFP DDMI, Port Mirroring, Port Statistic, STMP, RMON, Syslog		IEC 61000-4-3 (RS): Level 3	
Power		Approval and Test		
Input Voltage	Primary inputs: 48V (36~60V DC) Redundant inputs: 48V (36~60VDC)	Shock	IEC 60068-2-27 (processing)	
Power Consumption	260W (Max)	Freefall	IEC 60068-2-32 (processing)	
PoE Functions		Vibration	IEC 60068-2-6 (Processing)	
PoE functions	Power Available at PD: 25.50W	Ordering Information		
	Max Power delivered by PSE: 34.20W	Switch VIBC8648	Managed 8-port 10/100/1000 + 4-Slot gigabit SFP, IEEE 802.3af/at, Wide Temperature -40°C~70°C, Industrial PoE switch	
	Per port up to: 30W		Power Supply	SDR-480P-48: 480W DINR Rail 48VDC
	Output capacity for PoE at least: 200W		SFP VIBC-104	1000Base-SX 1.25G, Multi-mode SFP, 500m.
Recommended DIN Rail Power specs.			SFP VIBC-104-2	1000Base-SX 1.25G, Multi-mode, 3.3 V, 1310nm, SFP, 2Km
Operation	PFC	SFP VIBC-104-10	1000Base-LX 1.25G, Single Mode SFP, 10 Km.	
Output	48VDC@10A		SFP VIBC-123	1000Base-LX Bi-di Single mode SFP, 10 Km.
Power, Output	480W			
Voltage, Input	100-264 VAC			
Voltage, Output	48 VDC			

Dimensions



BCE Bos Consultancy Enterprises

BCE Bos Consultancy Enterprises is a Dutch based company, constantly building, extending and maintaining a network of distributors throughout Europe and Russia. Our aim is to identify resellers in each country to establish reliable long-term partnerships. **BCE** has the wide knowledge and specialization to deliver solutions for the high end of the security spectrum. **BCE** represents a large number of international manufacturers specialized in video networks for cities and industrial zones, thermal camera's, switches, personal media radio systems and covert solutions like as:



CarTag

Wireless security system protect stealing parts from cars parked at parking places of dealers, lease companies and fleetowners.



DigiController

IP Based I/O controller supporting many connectivity protocols



Rapidcam

Rapid deployment, user friendly, easy to install stand alone camera solution which can be used both for observation and covert purposes.



Thermal camera program

Thermal camera solutions for use at Industrial sites, Border Control, Airports, Harbours, Perimeters etc.

Fro bright exposure in colour in day time and monochrome during night time.

Solutions up to a distacne of 5 Kilometers



ANPR Camera program

ANPR camera program to monitor number plates for sites, parking lots, and entry/exit gates up to a speed of 220 kmph. Complete delivery with ANPR software.



Body Warn Camera program

The most reliable Portable Law Enforcement camera system used by Police, Special Forces, Border Control, Firebrigades, Surveillance and security Guards.



Smartdetect

Full stand alone camera system. Can be either used as point to point communication as well as within remote network environments. Specially designed for observation and covert operations.



Wavesight

Wireless Outdoor Video Network solutions suitable at cities, harbors, airports, and industrial areas. Providing stable Point to Point and Point to Multipoint connections up to 300 Mbps and 40 kilometer of distance with license free and licensed connections.



Switches and power supplies

A great variety of industrial and desktop switches. Managed, un-managed, PoE PoE+ switches suitable for integrated use at suveillance systems of cameras and wireless radio configurations. Up to 1 Gb.



Patio Mounts and brackets

Robust steel galvanised, aluminium or stainless steel patio mounts, pole extenders, L + M wall brackets and U-Clamps in different size and design. Ideal for easy installation of radios and cameras at top of buildings, poles and walls.



Stand Alone Solar Power system

The small light weight portable and rapid deploy solar solution for camera's and radio's at sites without any infrastructure

DISTRUBUTED BY:



BCE Bos Consultancy Enterprises

Bermweg 494
2907 LE Capelle aan den IJssel
the Netherlands
Tel.: +31 (0)104 502 545
Mobile: +31 (0)622 732 396
Email: info@bconsent.nl
Website: www.bconsent.nl