

ATEX Body Worn smartphone & Tablet



Chemical Industry
Off-Shore
Police
Security
Firebrigades
Special Forces



Main features



The **BCBW1** is the Mobile Phone while model **BCTA01** is the tablet variant. Both models are designed for a reliable Portable Law Enforcement camera system used by Police, Fire Brigade, Special Forces, Border control, Surveillance and Security with the following main features:

- Android 4.2.2
- Always connected via:
 - ◇ 2 Sim-card Slots
 - ◇ Quad band (3G)
 - ◇ Wi-Fi
 - ◇ Bluetooth
- Full-duplex video streaming (Sentinel)

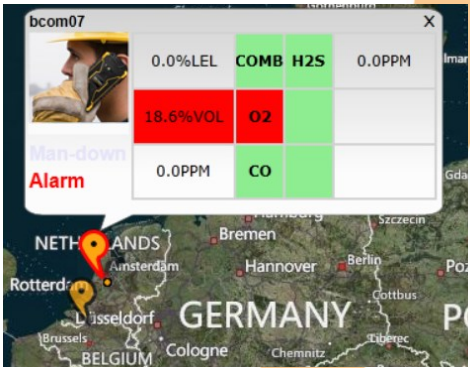
All in One Mobile Solution

1. **Stay Organized @ connected**
2. **Mobile workforce / permit to work**
3. **Man Down / Lone worker**
4. **Streaming Video**
5. **Integration of LEL meter**
6. **Push to Talk**
7. **Other client specific applications (Designed and developed on order)**

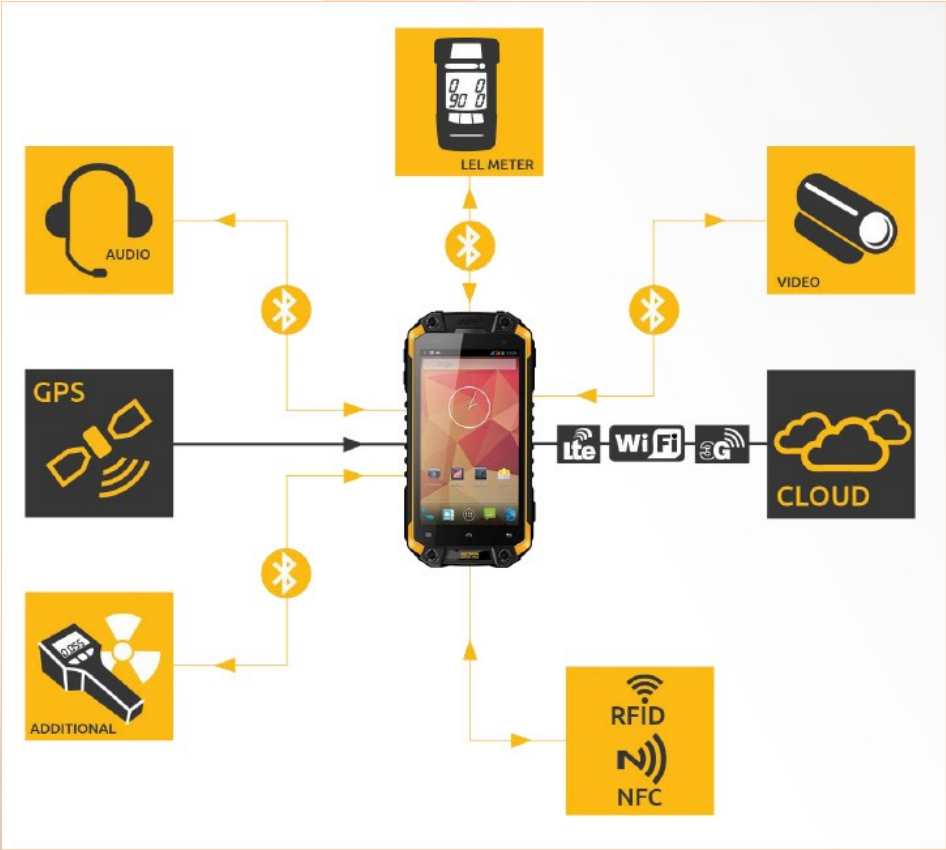
Specifications

Model:	BCBW01	BCTA01
Display:	4" - 1.280 x 780 (LCD) high Impact resistant WVGA with high brightness capacity	7" - 1.280 x 800 (LCD) high Impact resistant WVGA with high brightness capacity
Ingress Protection Rating:	IP68 Waterproof 40 min. Submersed in 1.2 meters of water	
Camera:	8 Megapixel backsite and 2 Megapixel at frontsite	
Screencover:	Gorilla Glas	
Bluetooth:	4.0	
Telecom network support:	GSM: 850/900/1.800/1.900MHz WCDMA: 850/1.900/2.100MHz Downlink: Highspeed Packett Acces: 42.2 Mps Uplink: Uplink speed: 11.5 Mbps	
Wifi:	802.11 B/g/n	
Sensors:	GPS, A-GPS, EPO, Accelerometer, Gyro Compass, Auto light sensor	
Operating System:	Android 4.2 Jelly Bean	
Chipset:	MTK, MT6589T Coretex A7 with Power VR Series 5XT GPU (28nm architecture)	MTK, MT6589T Coretex A7 with Power VR Series SGX
CPU speed:	Quad core 1.5 GHz.	
Memory:	1 Gigabyte	
Storage memory:	3 Gigabyte	16 Gigabyte, 12, 71 available
SD Card Option:	32 Gb micro SD Card included	Upgradable with micro SD Card (max. 32 GB.)
BT:	??	2.1 + EDR
Special features		
Special features:	Dual Sim / Dual Standby / Man Down / Track Trace / Additional Bluetooth integration	
Integration:	Remote Management Device Software Life Video & Audio conference Streaming Applications Push to Talk 3rd party Database Integration	
Psychical Characteristics		
Battery:	Li-ion minimum 2.200 mAh	Li-Ion 6.000 mAh
Dimensions:	76 x 148 x 18 mm. (W x L x D)	212 x 135 x 19 mm. (W x L x D)
Operating Temperature:	- 20°C ~ +60°C	
Encapsulation:	IP68	IP68 ??????
Nett weight:	209 gram	594 gram

Graphical User Interface (GUI)



Smart worker Philosophy



1. Mobile Track

- Location services
- Track & Trace

2. Mobile Track

- Two-way, High quality
- Audio- and Video-streaming

3. Man Down Alert

- Alarm when impac or fall occurs

4. Integration of LEL meter

- LEL meter will alarm in Mobile Worker
- Management Solution

Push To Talk

- Walkie-talkie
 - 1-to-many conversation
- Via Wifi or Cellular (3G)
 - No need to use Tetra network
- Communication button
- Full Duplex communication
- Low Cost of Ownership
- Easy to duplicate / Integrate
- Better secured / no eavesdrop

BCE Bos Consultancy Enterprises

BCE Bos Consultancy Enterprises is a Dutch based company, constantly building, extending and maintaining a network of distributors throughout Europe and Russia. Our aim is to identify resellers in each country to establish reliable long-term partnerships. **BCE** has the wide knowledge and specialization to deliver solutions for the high end of the security spectrum. **BCE** represents a large number of international manufacturers specialized in video networks for cities and industrial zones, thermal camera's, switches, personal media radio systems and covert solutions like as:



Wavesight

Wireless Video Outdoor Network solutions suitable at cities, harbors, airports and industrial areas. Providing stable Point to Point and Point to Multipoint connections up to 300 Mbps and 40 kilometers of distance with license free and licensed connections.



Switches, power supplies and Surge Protectors.

A great variety of industrial and desktop switches. Managed, Unmanaged, PoE, PoE+ switches suitable for integrated use at surveillance systems of cameras and wireless radio configurations. Up to 1 Gb.



RapidCam

RapdiCam is a rapid to deploy, user friendly stand alone camera solution which can be used for observation and covert covert purposes.



Thermal camera program.

Thermal camera solutions for use at Industrial sites, Border control, Airports, Harbours, Perimeters etc. For bright exposure in colour at day time and monochrome during night time. Solutions up to a distance of 5 kilometers.



ANPR Camera Program.

ANPR camera program to monitor number plates at sites, parking lots, entry/exit gates and highways at speeds up to 220 kmph. Can be also delivered with ANPR software or built-in Stainless steel pole.



DigiController

IP based I/O controller supporting many connectivity protocols. With web based interface, DIN rail mount and small form factor.



Body Worn Camera program.

The most reliable Portable Law Enforcement camera system used at Police, Special forces, border Control, fire brigades, Surveillance and Security Guards



Smartdetect

Full stand alone camera system. Can be either used as point to point communication as well as within remote network environments. Specially designed for observation and covert operations.



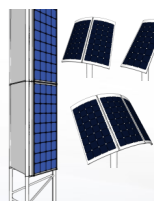
Cartag

Wireless security system protect stealing parts from cars parked at parking places of car dealers, lease companies and fleet owners.



Patio Mounts and Brackets.

Robust steel galvanised, aluminium or stainless steel patio mounts, pole extenders, L + M wall brackets and U-clamps in different size and design. Ideal for easy installation of radios and cameras at top of buildings, poles and walls.



Stand Alone Solar Power Systems.

The small light weight and rapid deploy solar solution for cameras and radio's at sites without any infrastructure

DISTRUBUTED BY:



BCE Bos Consultancy Enterprises

Bermweg 494
2907 LE Capelle aan den IJssel
the Netherlands
Tel.: +31 104 502 545
Mobile: +31 622 732 396
Email: info@bconsent.nl
Website: www.bconsent.nl