

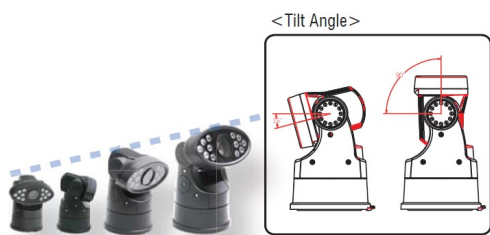
**Surveillance**



**Investigation**

## BDS-363 Rugged PTZ Camera

360° Endless Pan Rotation (-15° to 90° Tilt Angle)



The camera offer optimal sensitivity in both day and night shooting applications. At a set level of darkness, the IR-cut filter is automatically disabled (ICR ON) and the near-infrared sensitivity is increased. At a set level of brightness, the filter is automatically enabled (ICR OFF). The IR-cut filter automatically engages depending on the ambient light, allowing the camera 24/7 operation in a variety of lighting conditions.

The ideal camera to use for Traffic monitoring, Car Surveillance, Police and Firebrigade vehicles, Harbour Control, Investigation, Sensitive Site Surveillance, Observation and Object Inspection.

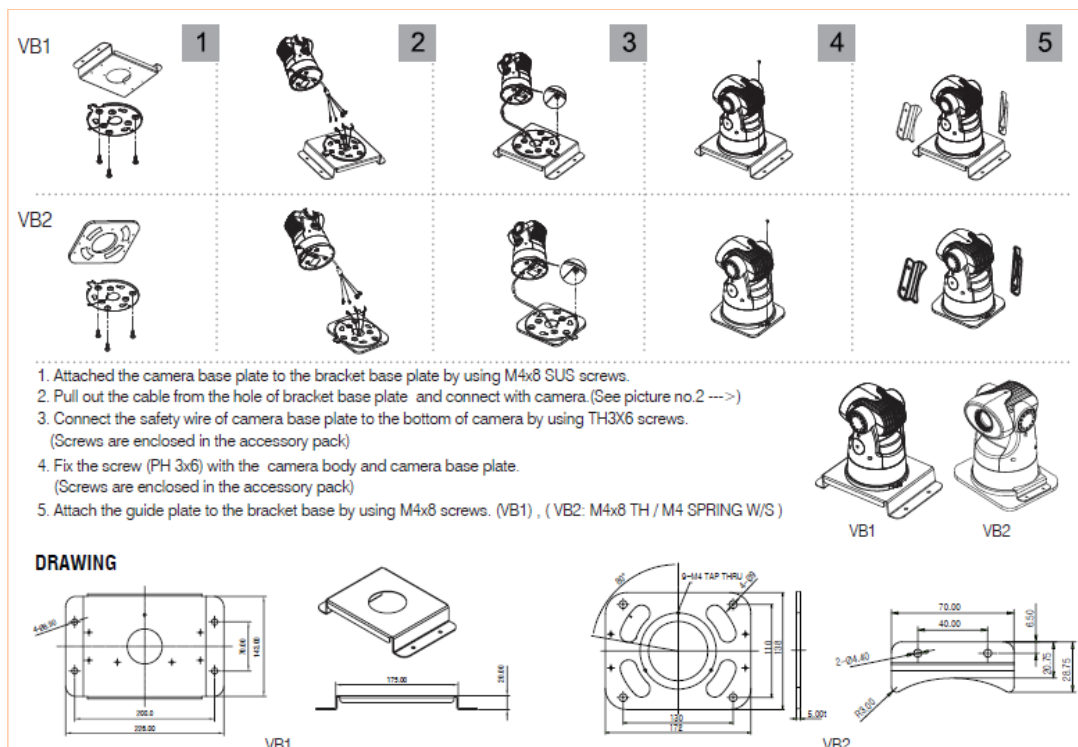
### Features

- 1/4" 613K pixels SONY Super HAD dual scan CCD
- 700TV lines of most highest resolution - HR7 mode
- Progressive scan 612,688 pixel
- Optical 36x power zoom and 32x digital zoom
- Dual scan 512x WDR
- Intelligent detection for baggage removal and loading (Option)
- 12pcs of 18Ø IR Lens (120 mm. Manual focussing)
- AC24V version for CCTV
- IP66 Outdoor Application
- Endless Pan rotation (TOP 15° ~ 270°, BOTTOM 345° ~ 90° Tilt angle)
- Up to 63 programmable presets
- Less than ±0.3° Preset Accuracy
- 8 programmable Tours, 4 Patterns
- Alarm - Move the camera to programmed Preset position with Alarm trigger (max. 2)
- 4 Scan(Programmable speed and diagonal scan)
- Programmable Privacy Masking(2 Zones)
- RS-422, RS-485 communication
- Multiple protocol (Pelco-D, Pelco-P, Wonwoo)
- Built-in Menu System for Setup of Programmable functions
- Mechanical Auto Flip
- Programmable Zoom Speed (Optional Update tool)
- Digital Noise Reduction (2D + 3D)
- Digital Image Stabilizer (DIS)
- Hight Light Compensation (HLC) Function

## Specifications

Camera			
Image Sensor:	1/4" SONY Super HAD II CCD (Double Scan)	Zoom:	Optical 36x, Digital 32x
Total pixels:	PAL: 1028 (H) x 596 (V) / NTSC: 1028(H) x 508 (V)		
Scanning system:	Interface		
Scanning Frequency:	PAL: 15.625 KHz (H), 50 Hz (V) / NTSC: 15.734KHz (H), 59.94Hz(V)		
Resolution:	Color: 700 TV Lines	Black White: 800 TV lines	
Min. Illumination:	Color DSS: 0.001 lux, BW DSS: 0.0004 lux / Color: 0.5 lux, BW: 0.2 lux		
Video Output:	1.0 Vp-p (750hm, composite)	SN Ratio:	More then 50 dB (AGC off)
Focal length:	f = 3.4 mm. ~ f = 122.4 mm. (F1.6 to F4.5)		
Focus:	Auto/ One Push / Manual/ Infinity	Focus Distance:	0.1 / 1.3 / 1.8 / 3.0 / 5.0 m
Exposure:	Auto / Shutter PRI/ Manual	Gain control:	Off/ On/ Auto Max. 32dB)
Shutter Speed:	NTSC: 1/60 ~ 1/100,000 sec	PAL: 1/50 ~ 1/100,000 sec	
WDR / BLC	Off / WDR / BLC	Day & Night:	Auto / Day / Night
White Balance:	ATW / One-Push / Indoor / Outdoor / Manual / Auto		
Image DNR:	Off / Manual / Auto	Primary Mask:	Off/ 8 Zones
Communcation:	Baud Rate: 2.400, 4.800, 9.600, 19.200, 38.400, 57.600 and 115.200 bps		
	Protocol: WTX, PELCO-D V1, PELCO-P, PELCO-D V5		
Display:	Disp. Sel / Init. Sel / Set Title / Set Init. Msg. / Language		
Functions			
Presets:	63 Points		
Tour:	8 x Programmable	Pattern:	2 Patterns
Flip:	Mechanical / Auto / Off (Rotate 90° at bottom of tilt)		
Auto sacn:	4 (programmable speed and diagonal scan)		
Privacy Zone:	2 blocks with title (Masking / Video off)		
Adress:	Up to 255 selectable ID (Rotary switch)		
Data Communcation:	RS-485 / RS-422	Protocol:	Multiprotocol
Baud Rate:	2.400 / 115.200 bps	Alarm In:	2 alarm NO/NC, Priority)
Alarm Out:	2 relay out (Hold, Latch)	Display:	Zone title on/off (start / end zone)
Mechanical			
Tilt:	TOP 15° ~ 270°, BOTTOM 345° ~ 90° Tilt angle, Proportional to zoom	Pan:	360° Endless Pan
Tilt Preset Speed:	60°/sec., 0.3° Accuracy	Pan Preset Speed:	110°/sec, 0.3° Accuracy
Environmental & electrical Characteristics			
Input Voltage:	12 Volt DC	Consumption:	40 Watt (3.3A Max.) Adapter not incl.
Operating temperature	-20°C ~ +50°C	Encapsulation:	IP66
Housing material:	Alumnium Alloy / Colour: Black	Humidity:	0% to 90%
Size:	138 (Ø )x 212 (H) mm.	Weight:	2.7 Kgs.
Standard package:	Camera; User manual English language; Power adapter; Cables. Optional: Hand Controller; Roof adapter		

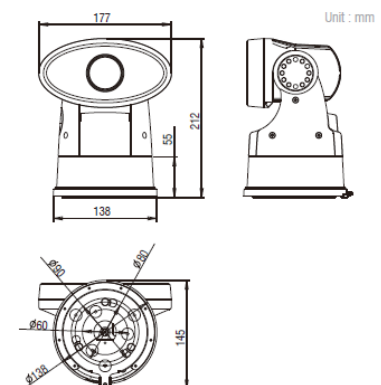
## Car Bracket



## Cable Connection



## Dimensions





# PTZ Controller



## Specifications

Keyboard communication:	Interface RS-485		
	Operating distance: 1.2 Km. (4.000 ft) on 24 AWG wire		
	Protocol: Multiple (Pelco-D, DRX-502)		
Data Connector type:	RJ-11 6-pin modular jack		
Keyboard Button:	5 pcs Keyboard functions		
	Camera function button (F1, F2, Focus Far/Near), Menu button		
Joystick:	Pan / Tilt zoom control, variable speed control		
Input Voltage:	12 VDC $\pm$ 2V	Net weight:	0.5 Kg.
Power Consumption:	Max. 140 mA	Humidity:	10% ~ 70% Non condensing
Operating temperature	- 0°C ~ +45°C	Dimensions:	130 x 125 x 145 mm. (WxHxD)

## Features

- Mini size PTZ Controller
- IR ON/OFF Button useful for IR PTZ cameras
- Fan & Heater ON/ OFF function
- 3-Axis Joystick control PTZ functions
- Prest position control (4 positions)
- Multiple protocol supported in each channel (Pelco D)
- Slave Keyboard support

## Functions



1. Shows the communication status (Power, communication)
2. F1 : Tour Functional keys.
3. F2 : Pattern Functional keys.
4. 5. Near/Far Focus : used for setting Zoom camera focus.
6. Menu : Get into the dome menu(Press for 2 seconds)
7. Joystick : Control Pan, Tilt and Zoom In , Out
8. Joystick Button : Used to define the Presets

Camera IR LED ON / OFF Control  
 IR On / OFF Switch  
 - Press Joystick Button and F1  
 White LED On / OFF Switch  
 - Press Joystick Button and F1  
 \* On : Tele  
 \* OFF : wide  
 For Auto setting Press Joystick button and F2



1. Communication Port : connect to PTZ port (cable).
2. Setting Switch : It used for setting address, bps and protocol setting.



**PTZ Address (0 ~ 15)**

**Protocol**  
 Pelco-D : SW5(OFF), SW6(OFF)  
 WONWOO : SW5(ON), SW6(OFF)

**Tx Termination** ON/OFF

**Rx Termination** ON/OFF

**Baud Rates**  
 2400 (BPS) : SW7(OFF), SW8(OFF)  
 4800 (BPS) : SW7(ON), SW8(OFF)  
 9600 (BPS) : SW7(OFF), SW8(ON)  
 19200 (BPS) : SW7(ON), SW8(ON)

# Mobile Security DVR System



## Specifications

Video Compression:	MPEG4
Video IN/Video OUT:	4/2
Video Output:	VGA x 1 , BNC x 1
Audio IN/ Audio OUT:	4/1
Sensor In/Relay Out	4/1
Display Frame Rate (NTSC/PAL)	CIF: 12/100 fps D1: 60/50fps ; Enhance: 30/25 fps
Dual Monitor Output:	3 kinds of outputs: MAIN/SPOT, MAIN/MAIN and SPOT/MAIN
User Input device:	Mouse, Remote control, LCM
Backup device:	USB A-type x 1 (connect with USB mouse, storage), USB B-type x 1 (connect with PC/NB)
Number of HDD's supported:	1 x removable 3.5" or 2.5" SATA HDD
RS-483 connector:	Built-in RS-485 connector for PTZ, Multi DVR connection
Power source:	12 - 24 VDC
Power Output:	12 VDC, 2 Amp. Supports camera power
Software Support:	iStable (Video Stabilizer software), iEnhance (Video processing software for better video quality), USB Playback Console
Optional Accessories:	GPS Receiver, HDD Reader (USB Interface), MOB Adapter (Users can connect removable HDD bay with PC for backup directly) BNC Vehicle Monitor
Netweight:	2.2Kgs.
Operating temperature	- 0°C ~ +50°C
Dimensions:	258 x 80 x 200 mm. (WxHxD)



### Delivery:

1. DVR Unit
2. Remote Control
3. USB Cable
4. Software CD (User Manual)
5. Quick Installation Guide
6. Z-Bracket (incl. 4 screws)
7. Power Cable
8. SATA Cable
9. An extended IR sensor cable
10. Removable hard disk drawer accessories (with spare screws)

## 8.0" LED Monitor



The 8 "LCD type with a 4: 3 aspect ratio has a metal casing and a high contrast level by using LED black-light technology.

Thanks to the LED technology the monitor using up to 45% less power than the LCD/TFT panels.

Further features are:

- Mmonitor a fast response time
- on-screen display
- Display resolution of 800 x 600 pixels
- Three video outputs allows to connect multiple devices to this compact monitor.

### Specifications

Camera			
Screen type:	8"LED	Resolution:	800 x 600 pixels (V x H)
Pixelpitch:	0.675 (H) x 0.2025 (V) mm.	Edge Thickness:	22 mm.
Contrast ratio:	500 : 1	Brightness:	250cd/m <sup>2</sup>
Response time:	10 ~ 15 ms.	Viewing angles:	70° Horizontal - 70° Vertical
Screen colours	16.7 Million	Video Synchroniastion:	Yes
Colour Temperature:	Adjustable	Video compatibility:	Multi Standard for PAL/NTSC
Aspect ratio:	4 : 3	VGA freq. Correction:	Yes
Audio/stereo:	None		
Interfaces and connectivity			
Video INPUT:	2 x CVBS (BNC) + 1 x VGA	Video OUTPUT:	None
Audio:	None	Impedance:	75 Ohm.
VESA:	75 x 75 mm.	Current:	1 x AC
Environmental & electrical Characteristics			
Net power:	12 Volt DC, 1 Amp.	Consumption:	12 Watt
Operating temperature	-10°C ~ +50°C	Weight:	1.4 Kgs.
Housing colour:	Black	Languages:	8
Size:	205 x 173 x 27 mm. (bxhxd)	OSD:	Contrast, Brightness, Clock, H- and V- position, Input
TCO standards:	CE/FCC/E13/WEE/RoHs-2		

### BCE Bos Consultancy Enterprises

**BCE Bos Consultancy Enterprises** is a Dutch based company, constantly building, extending and maintaining a network of distributors throughout Europe and Russia. Our aim is to identify resellers in each country to establish reliable long-term partnerships. **BCE** has the wide knowledge and specialization to deliver solutions for the high end of the security spectrum. **BCE** represents a large number of international manufacturers specialized in video networks for cities and industrial zones, thermal camera's, switches, personal media radio systems and covert solutions like as:



#### Wavesight

Wireless Video Outdoor Network solutions suitable at cities, harbors, airports and industrial areas. Providing stable Point to Point and Point to Multipoint connections up to 300 Mbps and 40 kilometers of distance with license free and licensed connections.



#### Switches, power supplies and Surge Protectors.

A great variety of industrial and desktop switches. Managed, Unmanaged, PoE, PoE+ switches suitable for integrated use at surveillance systems of cameras and wireless radio configurations. Up to 1 Gb.



#### RapidCam

RapdiCam is a rapid to deploy, user friendly stand alone camera solution which can be used for observation and covert covert purposes.



#### Thermal camera program.

Thermal camera solutions for use at Industrial sites, Border control, Airports, Harbours, Perimeters etc. For bright exposure in colour at day time and monochrome during night time. Solutions up to a distance of 5 kilometers.



#### ANPR Camera Program.

ANPR camera program to monitor number plates at sites, parking lots, entry/exit gates and highways at speeds up to 220 kmph. Can be also delivered with ANPR software or built-in Stainless steel pole.



#### DigiController

IP based I/O controller supporting many connectivity protocols. With web based interface, DIN rail mount and small form factor.



#### Body Worn Camera program.

The most reliable Portable Law Enforcement camera system used at Police, Special forces, border Control, fire brigades, Surveillance and Security Guards



#### Smartdetect

Full stand alone camera system. Can be either used as point to point communication as well as within remote network environments. Specially designed for observation and covert operations.



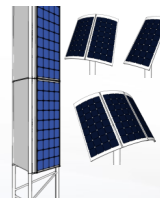
#### Cartag

Wireless security system protect stealing parts from cars parked at parking places of car dealers, lease companies and fleet owners.



#### Patio Mounts and Brackets.

Robust steel galvanised, aluminium or stainless steel patio mounts, pole extenders, L + M wall brackets and U-clamps in different size and design. Ideal for easy installation of radios and cameras at top of buildings, poles and walls.



#### Stand Alone Solar Power Systems.

The small light weight and rapid deploy solar solution for cameras and radio's at sites without any infrastructure

#### DISTRUBUTED BY:



#### BCE Bos Consultancy Enterprises

Bermweg 494  
2907 LE Capelle aan den IJssel  
The Netherlands  
Tel.: +31 104 502 545  
Mobile: +31 622 732 396  
Email: [info@bconsent.nl](mailto:info@bconsent.nl)  
Website: [www.bconsent.nl](http://www.bconsent.nl)