

DIGI9000 – Controller



Highlights and Technical information



DIGI 9052 Module

Highlights

DIGI 9000 range is a reliable, quick to install and easy to handle module based on popular 10/100 Ethernet working standards used in most business environments.

DIGI 9000 supports UDP protocol over Ethernet. With UDP/IP support, the DIGI 9000 module can actively send I/O data stream to 8 Ethernet nodes. The standard integrated Modbus/TCP protocol increases your connectivity for HMI/SCADA software built in with the Modbus/TCP driver.

Standard delivery of the software package on CD contents DIGI 9000 firmware with built-in Modbus/TCP server. Necessary DLL drivers and Windows Utility tools for user/client data are provided as well.

By using the Windows utility software, the user can configure his own DA/C system; integrate with HMI software package via Modbus/TCP or Modbus/TCP OPC server. You even more can use the DLL driver and ActiveX tools to develop your own applications.

Specifications

○ Digital Input:

- Input channels: 8
- Input type
 - Dry contact
 - logic level 0 : Close to ground
 - logic level 1: Open
 - Wet contact:
 - logic level 0: +2Vac max.
 - logic level 1: +5 to 30 Vac max.
- Supports: 1 kHz counter input (32-bit + 1-bit overflow)
- Isolation: Fully photo isolation 2,500Vrms

○ Digital Output:

- Source Type: 30Vdc, 3A
- Pulse/delay output

○ Optical Isolation: 2,500Vrms

○ Power requirements: Unregulated +10 ~ +30VDC

○ Power consumption: 2W

○ Display:

- Status indicator 16 LEDs

DIGI Ethernet I/O Utility Overview

The Windows utility software offers a graphical interface that helps you configure the **DIGI 9000** modules. It is also very convenient to test and monitor your remote DAQ system.

The following guidelines will give you some brief instructions on how to use this Utility:

- Main Menu
- Network Setting
- Adding Remote Station
- Security setting
- I/O Module Configuration



DIGI 9052 Main Menu Ethernet I/O utility shortcut

Digital Input				Digital Output		
Channel	Status	Counts/Latch	Mode	Channel	Status	DO Setting
DI 0	<input checked="" type="checkbox"/>		Direct input	DO 0	<input checked="" type="checkbox"/>	<input type="button" value="ON"/> <input type="button" value="OFF"/>
DI 1	<input checked="" type="checkbox"/>		Direct input	DO 1	<input checked="" type="checkbox"/>	<input type="button" value="ON"/> <input type="button" value="OFF"/>
DI 2	<input checked="" type="checkbox"/>		Direct input	DO 2	<input checked="" type="checkbox"/>	<input type="button" value="ON"/> <input type="button" value="OFF"/>
DI 3	<input checked="" type="checkbox"/>		Direct input	DO 3	<input checked="" type="checkbox"/>	<input type="button" value="ON"/> <input type="button" value="OFF"/>
DI 4	<input checked="" type="checkbox"/>		Direct input	DO 4	<input checked="" type="checkbox"/>	<input type="button" value="ON"/> <input type="button" value="OFF"/>
DI 5	<input checked="" type="checkbox"/>		Direct input	DO 5	<input checked="" type="checkbox"/>	<input type="button" value="ON"/> <input type="button" value="OFF"/>
DI 6	<input checked="" type="checkbox"/>		Direct input	DO 6	<input checked="" type="checkbox"/>	<input type="button" value="ON"/> <input type="button" value="OFF"/>
DI 7	<input checked="" type="checkbox"/>		Direct input	DO 7	<input checked="" type="checkbox"/>	<input type="button" value="ON"/> <input type="button" value="OFF"/>

OFF ON Update Time Interval: 1000 msec

DIGI 9052 Monitoring window page shortcut

- **Network support:**
 - Ethernet 10/100 Mbps
 - UTP RJ45 connection
 - Modbus/TCP; TCP/IP; UDP
- **Hardware:**
 - Based on low cost platform with IP stack
 - DIN Rail clips included
- **Software tools:**
 - DLL, ActiveX, VB, Delphi
- **Product options:**
 - Power supply
- **Order information:**
 - DIGI 9052
 - DIGI power adapter 230V/50Hz

BCE Bos Consultancy Enterprises

BCE Bos Consultancy Enterprises is a Dutch based company, constantly building, extending and maintaining a network of distributors throughout Europe and Russia. Our aim is to identify resellers in each country to establish reliable long-term partnerships. **BCE** has the wide knowledge and specialization to deliver solutions for the high end of the security spectrum. **BCE** represents a large number of international manufacturers specialized in video networks for cities and industrial zones, thermal camera's, switches, personal media radio systems and covert solutions like as:



Wavesight

Wireless Video Outdoor Network solutions suitable at cities, harbors, airports and industrial areas. Providing stable Point to Point and Point to Multipoint connections up to 300 Mbps and 40 kilometers of distance with license free and licensed connections.



Switches, power supplies and Surge Protectors.

A great variety of industrial and desktop switches. Managed, Unmanaged, PoE, PoE+ switches suitable for integrated use at surveillance systems of cameras and wireless radio configurations. Up to 1 Gb.



RapidCam

RapdiCam is a rapid to deploy, user friendly stand alone camera solution which can be used for observation and covert covert purposes.



Thermal camera program.

Thermal camera solutions for use at Industrial sites, Border control, Airports, Harbours, Perimeters etc. For bright exposure in colour at day time and monochrome during night time. Solutions up to a distance of 5 kilometers.



ANPR Camera Program.

ANPR camera program to monitor number plates at sites, parking lots, entry/exit gates and highways at speeds up to 220 kmph. Can be also delivered with ANPR software or built-in Stainless steel pole.



DigiController

IP based I/O controller supporting many connectivity protocols. With web based interface, DIN rail mount and small form factor.



Body Worn Camera program.

The most reliable Portable Law Enforcement camera system used at Police, Special forces, border Control, fire brigades, Surveillance and Security Guards



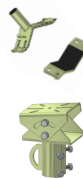
Smartdect

Full stand alone camera system. Can be either used as point to point communication as well as within remote network environments. Specially designed for observation and covert operations.



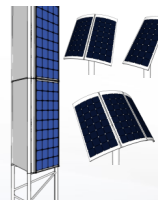
Cartag

Wireless security system protect stealing parts from cars parked at parking places of car dealers, lease companies and fleet owners.



Patio Mounts and Brackets.

Robust steel galvanised, aluminium or stainless steel patio mounts, pole extenders, L + M wall brackets and U-clamps in different size and design. Ideal for easy installation of radios and cameras at top of buildings, poles and walls.



Stand Alone Solar Power Systems.

The small light weight and rapid deploy solar solution for cameras and radio's at sites without any infrastructure

DISTRUBUTED BY:



BCE Bos Consultancy Enterprises

Bermweg 494
2907 LE Capelle aan den IJssel
the Netherlands

Tel.: +31 104 502 545
Mobile: +31 622 732 396
Email: info@bconsent.nl
Website: www.bconsent.nl