

FireFly



Multi-platform Outdoor Wireless Link



Firefly is the latest addition to Wavesight's range of high-performance, licence-exempt, wireless CCTV links.

Using standards based on OFDM technology with proprietary security features, this powerful plug-and-play wireless link has been optimised for short-range Point-to-Point applications up to 54 Mbps (500 metres).

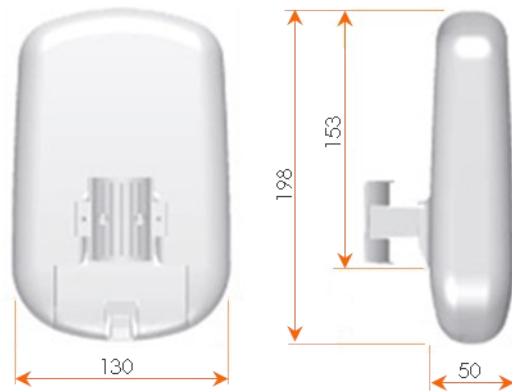
Key features

- Short Range Point to Point radio connection
- Master/Client
- Up to 54 Mbps of video transmission
- 150 Mbps Data Rate
- Passive Power over Ethernet
- 4~15dBm Radio Gain (1dBm steps)
- 15dBi MIMO Antenna
- Supports: SNMP V2/V3 - VLAN 802.1q - SSID Masking - MAC Filtering
- Dynamic Frequency Selection (DFS)
- Encryption: AES/WPA-PSK - WPA2-PSK
- SSID Masking - MAC Filtering - STP Support
- Transmit Power Control
- Multicast Enhancement Support
- Web Server for configuration and operational analysis

Applications

- | | |
|---|---|
| <ul style="list-style-type: none">• Point to Point Data• Point to Point Video• Point to Point Voice• Master/Client | <ul style="list-style-type: none">• Residential Gate-to-House• Commercial Building-to-Building• Industrial Data and CCTV• Up to 500 mtr. Range of transmission |
|---|---|

Specifications



RADIO

Operating frequency	5.180-5.320GHz / 5.500-5.720GHz / 5.745 - 5.825GHz (country dependant)
Operating range	up to 500 mtr.
Operating Mode	
- Master (WDS)	•
- Client (WDS)	•
Modulation	OFDM
Max. RF Output Power	1W EIRP
Data Rate	IEEE802.11a/n version 2.0 up to 150 Mbps
Frequency & Power Control	DFS & TPC
Antenna Specification	Integrated Dual Polarised MIMO / Gain: 15dBi / Horizontal Beamwidth: 58° / Vertical Beamwidth 61° / VSWR: Max. 1.5 / Impedance: 50 Ohm
Managenent Tools	Web Server / SNMP v2/v3

QUALITY OF SERVICE

IEEE	802.1P
VLAN	802.1Q

INTERFACE

Ethernet Interface	10/100 BaseT Auto Sensing, All ports screened
---------------------------	---

SECURITY

Security	WEP Shared Key / WPA-PSK / WPA2-PSK / WPA-PSK Mixed Mode (CCMP, TKIP & CCMP)
Authentication	802.11x / WPA-EAP / 802.11x / WPA2-EAP (TLS, TTLS, PEAP)

POWER SUPPLY

Input to PoE Injector	110VAC - 240VAC, 50/60Hz.
Output from PoE Injector	12/24V DC (Passive PoE)
Power Consumption	5Watt

PHYSICAL

Dimensions	197 x 133 x 58 mm.
Weight	350 Grams
Mounting	Wall/pole mount

ENVIRONMENTAL

IP Rating	IP55
Operating Temperature	-20°C - +70°C
Humidity	5% to 95% Relative Humidity (Non-Condensing)
Housing	Impact Resistant ABS

APPROVALS

Approvals	EN 301 893-v1.7.1 (Accredited) / EN 302 502-v1.2.1 / EN 301 489-1/17 / EN 62311 / EN 60950-1
------------------	--

Product line



FireFly - Model: WM271IN (Set only)

Operating Range:	Up to 500m. @ 54 Mbps.
Connection:	Point to Point
Beamwidth:	61°
Max. RF power output:	1 W EIRP
Dimensions:	197 x 133 x 58 mm.
Weight:	0.3 Kg.
IP Rating:	IP55



WaveSPRINT - Model: WSP-001

Operating Range:	Upt to 1 Km. @ 54 Mbps.
Connection:	Point to Point
Beamwidth:	40°
Max. RF power output:	1 W EIRP
Max. Satellites supported:	1
Dimensions:	110 x 119 x 51 mm.
Weight:	0.3 Kg.



WaveSPRINT Turbo - Model: WSP-002

Operating range:	Up to 1 Km @ 108 Mbps. or Up to 2 km. @ 54 Mbps.
Connection:	Point to Point
Beamwidth:	40°
Max. RF power output:	1 W EIRP
Max. Satellites supported:	1 x WaveSPRINT-Turbo - PtP
Dimensions:	110 x 119 x 51 mm.
Weight:	0.3 Kg.



WaveSPRINT Turbo MP - Model: WSP-003

Operating range:	Up to 1 Km @ 108 Mbps. (PtP) or Up to 2 km. @ 54 Mbps. (PtMP)
Connection:	Point to Point or Point to Multipoint
Beamwidth:	40°
Max. RF power output:	1 W EIRP
Max. Satellites supported:	1 x WaveSPRINT-Turbo - PtP
Dimensions:	110 x 119 x 51 mm.
Weight:	0.3 Kg.



WaveFLOW - Model: WFL-001

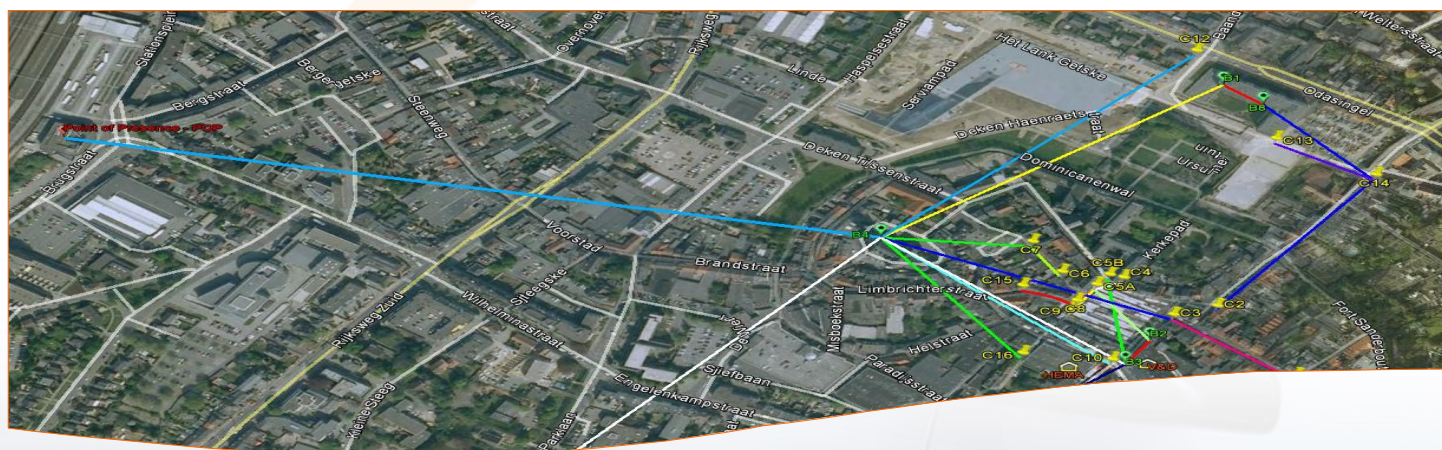
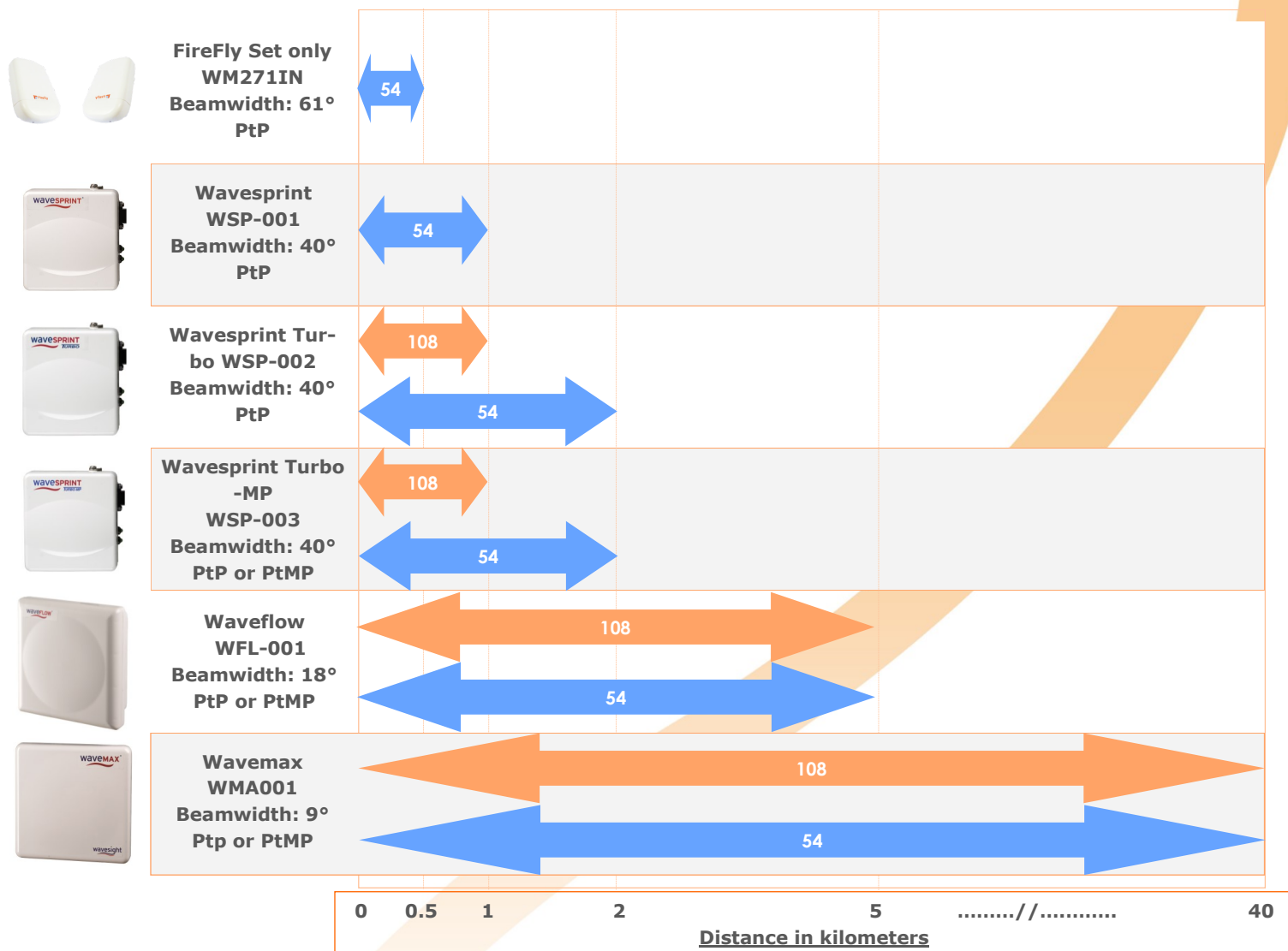
Operating range:	Up to 5 Km
Data Rate:	Up to 54 Mbps or Up to 108 Mbps (Turbo Mode)
Connection:	Point to Point or Point to Multipoint
Beamwidth:	18°
Max. RF power output:	4 W EIRP
Max. Satellites supported:	4
Dimensions:	190 x 190 x 72 mm.
Weight:	1.2 Kg.



WaveMAX - Model: WMA-001

Operating range:	Up to 40 Km
Data Rate:	Up to 54 Mbps or Up to 108 Mbps (Turbo Mode)
Connection:	Point to Point or Point to Multipoint
Beamwidth:	9°
Max. RF power output:	4 W EIRP
Max. Satellites supported:	4
Dimensions:	310 x 310 x 80 mm.
Weight:	1.6 Kg.

Quick Reference Table



Legenda	
Capacity	<div>54 Mbps</div> <div>108 Mbps</div>
PtP	Point to Point
PtMP	Point to Multi Point

BCE Bos Consultancy Enterprises

BCE Bos Consultancy Enterprises is a Dutch based company, constantly building, extending and maintaining a network of distributors throughout Europe and Russia. Our aim is to identify resellers in each country to establish reliable long-term partnerships. **BCE** has the wide knowledge and specialization to deliver solutions for the high end of the security spectrum. **BCE** represents a large number of international manufacturers specialized in video networks for cities and industrial zones, thermal camera's, switches, personal media radio systems and covert solutions like as:



Wavesight

Wireless Video Outdoor Network solutions suitable at cities, harbors, airports and industrial areas. Providing stable Point to Point and Point to Multipoint connections up to 300 Mbps and 40 kilometers of distance with license free and licensed connections.



Switches, power supplies and Surge Protectors.

A great variety of industrial and desktop switches. Managed, Unmanaged, PoE, PoE+ switches suitable for integrated use at surveillance systems of cameras and wireless radio configurations. Up to 1 Gb.



RapidCam

RapdiCam is a rapid to deploy, user friendly stand alone camera solution which can be used for observation and covert covert purposes.



Thermal camera program.

Thermal camera solutions for use at Industrial sites, Border control, Airports, Harbours, Perimeters etc. For bright exposure in colour at day time and monochrome during night time. Solutions up to a distance of 5 kilometers.



ANPR Camera Program.

ANPR camera program to monitor number plates at sites, parking lots, entry/exit gates and highways at speeds up to 220 kmph. Can be also delivered with ANPR software or built-in Stainless steel pole.



DigiController

IP based I/O controller supporting many connectivity protocols. With web based interface, DIN rail mount and small form factor.



Body Worn Camera program.

The most reliable Portable Law Enforcement camera system used at Police, Special forces, border Control, fire brigades, Surveillance and Security Guards



Smartdetect

Full stand alone camera system. Can be either used as point to point communication as well as within remote network environments. Specially designed for observation and covert operations.



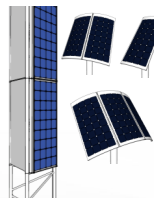
Cartag

Wireless security system protect stealing parts from cars parked at parking places of car dealers, lease companies and fleet owners.



Patio Mounts and Brackets.

Robust steel galvanised, aluminium or stainless steel patio mounts, pole extenders, L + M wall brackets and U-clamps in different size and design. Ideal for easy installation of radios and cameras at top of buildings, poles and walls.



Stand Alone Solar Power Systems.

The small light weight and rapid deploy solar solution for cameras and radio's at sites without any infrastructure.

Complete pre-assembled pole solution on request.

DISTRUBUTED BY:



BCE Bos Consultancy Enterprises

Bermweg 494
2907 LE Capelle aan den IJssel
the Netherlands
Tel.: +31 (0)104 502 545
Mobile: +31 (0)622 732 396
Email: info@bconsent.nl
Website: www.bconsent.nl