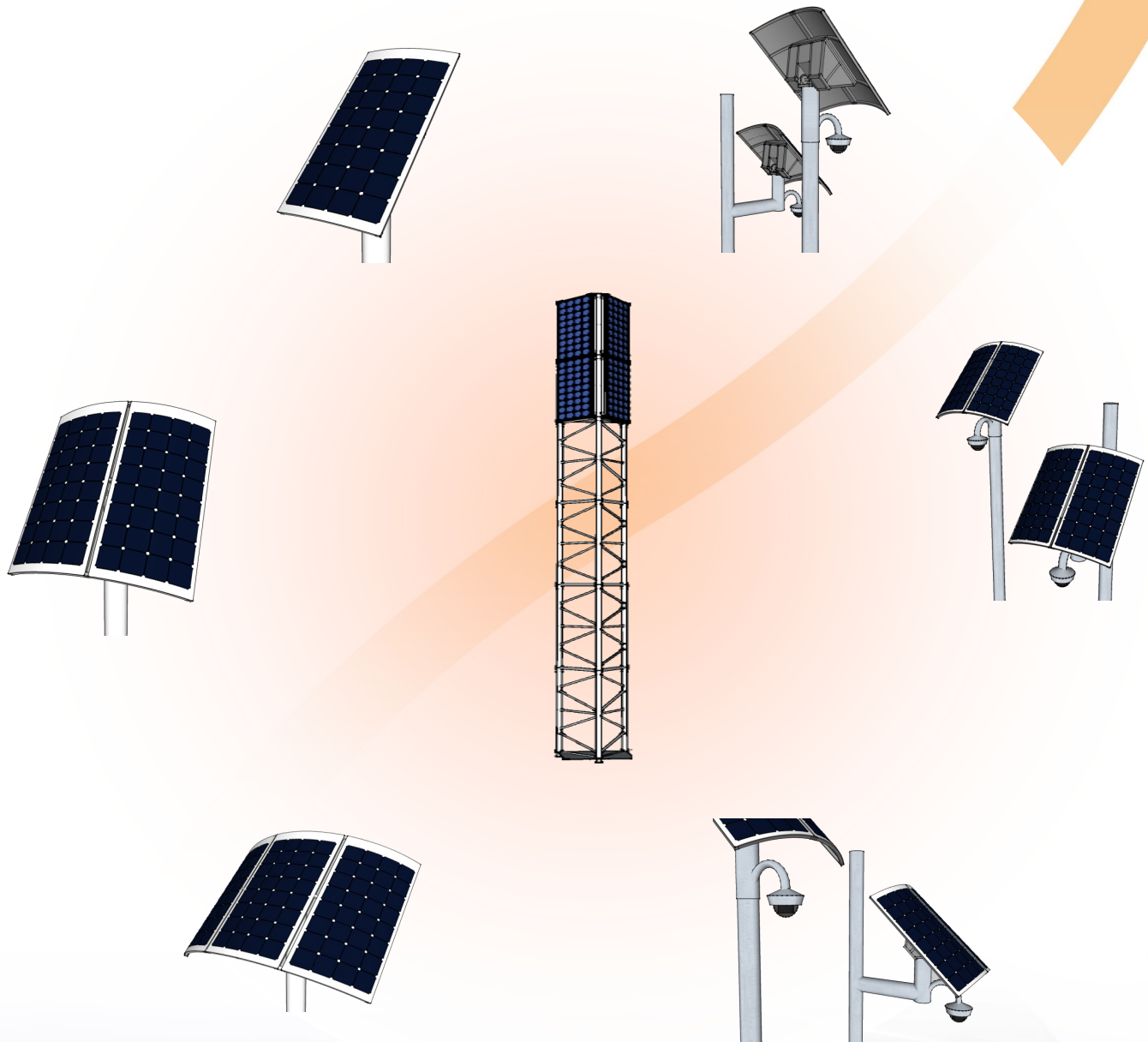


# The stand alone Solar Power – SASP



## Introduction

- Delivers between 50 and 411 Watts Electricity
- Ready to Integrate in any type of camera and wireless communication
- Rapid Deployment
- Lightweight Design

As Photovoltaic Consulting and BCE we are proud to introduce the Stand Alone Solar Panel based **SASP** upon the latest innovated solar panel technology for stand-alone CCTV applications, SASP.

**SASP** is small, lightweight, portable, rapid to deploy, custom designed and Made in Holland product utilizing smart high performing solar power elements together with a lithium battery pack which are build in a robust lightweight aluminium housing.

**SASP** is ready to connect to cameras and wireless outdoor video transmission radios what makes it very attractive for stand-alone use. For locations where normal utility power is not available, very expensive or long, this solar system add-on is your solution.

Utilizing the latest in solar panel technology, the systems offers a varied range of Electricity, beginning at 50 watts and building up to a max. capacity of 411 Watts. For CCTV systems in Dubai less watts are needed, as for CCTV systems in the UK more are needed depending on location and use. The solar add-on offers off grid continuous power which can be used to run a 24h stand-alone CCTV surveillance system.

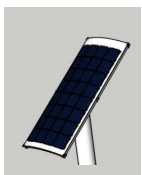
Optically corrected individual solar cells gather ambient light from all angles, even on overcast days, whereas conventional panels performing only with direct sunlight. The unit can be mounted on all type of street furniture or pole and work with any type and make of CCTV cameras. Best however, in combination with low-consuming CCTV systems.

## Applications

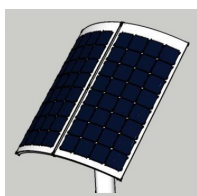
**SASP** is a small and lightweight system, portable and allows rapid deployment. Custom-designed and manufactured in the Netherlands using military-grade components, the **SASP** is suitable for a wide range of commercial and industrial applications, including:

- |                                    |                               |
|------------------------------------|-------------------------------|
| ⇒ CCTV Surveillance configurations | ⇒ Weldings                    |
| ⇒ Wireless radio connections       | ⇒ Perimeter protection        |
| ⇒ Oil and Gas Riggs/Pipelines      | ⇒ Last Mile Communication     |
| ⇒ SCADA and Telemetry systems      | ⇒ Cities and Industrial zones |
| ⇒ Irrigation systems               |                               |

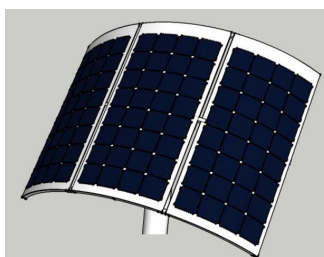
## Configurations



Model	Nr. of panels	Cap. (Watt)	Output (VDC)	Dimensions (mm)
<b>SASP- 50W-B48V</b>	1	50	48	545 x 1.120 x 390*
<b>SASP-100W-B48V</b>	1	100	48	1.056 x 610 x 390*
<b>SASP-137W-B48V</b>	1	137	48	545 x 1.500 x 390*



Model	Nr. of panels	Cap. (Watt)	Output (VDC)	Dimensions (mm)
<b>SASP-100W-B48V</b>	2	100	48	1.056 x 610 x 390*
<b>SASP-200W-B48V</b>	2	200	48	1.056 x 1.120 x 390*
<b>SASP-274W-B48V</b>	2	274	48	1.056 x 1.500 x 390*



Model	Nr. of panels	Cap. (Watt)	Output (VDC)	Dimensions (mm)
<b>SASP-150W-B48V</b>	3	150	48	1.473 x 610 x 390*
<b>SASP-300W-B48V</b>	3	300	48	1.473 x 1.120 x 390*
<b>SASP-411W-B48V</b>	3	411	48	1.473 x 1.500 x 390*

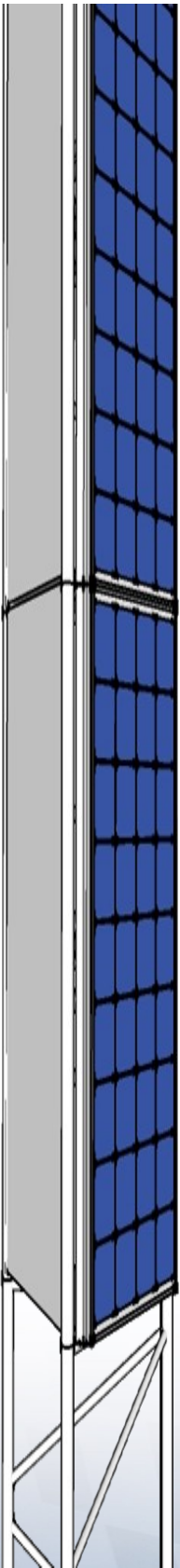
\* Including casing

## System delivery

### Short System description

- **Curved Solar Panels for maximum performance**
- **Inverters**
- **Lightweight battery pack for 24-hours backup**
- **Robust anodised aluminium frame**
- **Maintenance friendly housing**
- **Adjustable Wall/pole clams**
- **Custom-made design on request**

## Pole and container construction (On request)





## BCE Bos Consultancy Enterprises

**BCE Bos Consultancy Enterprises** is a Dutch based company, constantly building, extending and maintaining a network of distributors throughout Europe and Russia. Our aim is to identify resellers in each country to establish reliable long-term partnerships. **BCE** has the wide knowledge and specialization to deliver solutions for the high end of the security spectrum. **BCE** represents a large number of international manufacturers specialized in video networks for cities and industrial zones, thermal camera's, switches, personal media radio systems and covert solutions like as:



### Wavesight

Wireless Video Outdoor Network solutions suitable at cities, harbors, airports and industrial areas. Providing stable Point to Point and Point to Multipoint connections up to 300 Mbps and 40 kilometers of distance with license free and licensed connections.



### Switches, power supplies and Surge Protectors.

A great variety of industrial and desktop switches. Managed, Unmanaged, PoE, PoE+ switches suitable for integrated use at surveillance systems of cameras and wireless radio configurations. Up to 1 Gb.



### RapidCam

RapdiCam is a rapid to deploy, user friendly stand alone camera solution which can be used for observation and covert covert purposes.



### Thermal camera program.

Thermal camera solutions for use at Industrial sites, Border control, Airports, Harbours, Perimeters etc. For bright exposure in colour at day time and monochrome during night time. Solutions up to a distance of 5 kilometers.



### ANPR Camera Program.

ANPR camera program to monitor number plates at sites, parking lots, entry/exit gates and highways at speeds up to 220 kmph. Can be also delivered with ANPR software or built-in Stainless steel pole.



### DigiController

IP based I/O controller supporting many connectivity protocols. With web based interface, DIN rail mount and small form factor.



### Body Worn Camera program.

The most reliable Portable Law Enforcement camera system used at Police, Special forces, border Control, fire brigades, Surveillance and Security Guards



### Smartdetect

Full stand alone camera system. Can be either used as point to point communication as well as within remote network environments. Specially designed for observation and covert operations.



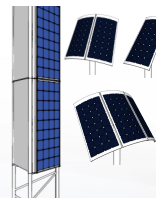
### Cartag

Wireless security system protect stealing parts from cars parked at parking places of car dealers, lease companies and fleet owners.



### Patio Mounts and Brackets.

Robust steel galvanised, aluminium or stainless steel patio mounts, pole extenders, L + M wall brackets and U-clamps in different size and design. Ideal for easy installation of radios and cameras at top of buildings, poles and walls.



### Stand Alone Solar Power Systems.

The small light weight and rapid deploy solar solution for cameras and radio's at sites without any infrastructure

### DISTRUBUTED BY:



### BCE Bos Consultancy Enterprises

Bermweg 494  
2907 LE Capelle aan den IJssel  
the Netherlands

Tel.: +31 104 502 545  
Mobile: +31 622 732 396  
Email: [info@bconsent.nl](mailto:info@bconsent.nl)  
Website: [www.bconsent.nl](http://www.bconsent.nl)